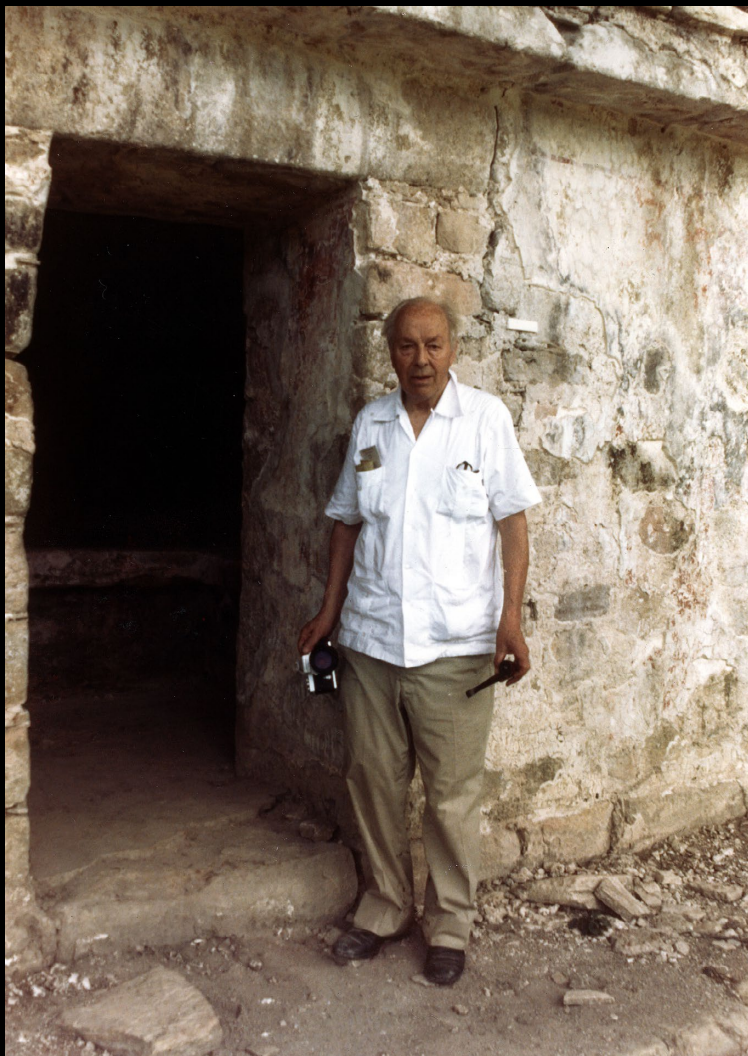


Bonampak and Its Discoverer, Giles Healey

Photographs by Giles Healey and Merle Greene Robertson

Captions by Merle Greene Robertson

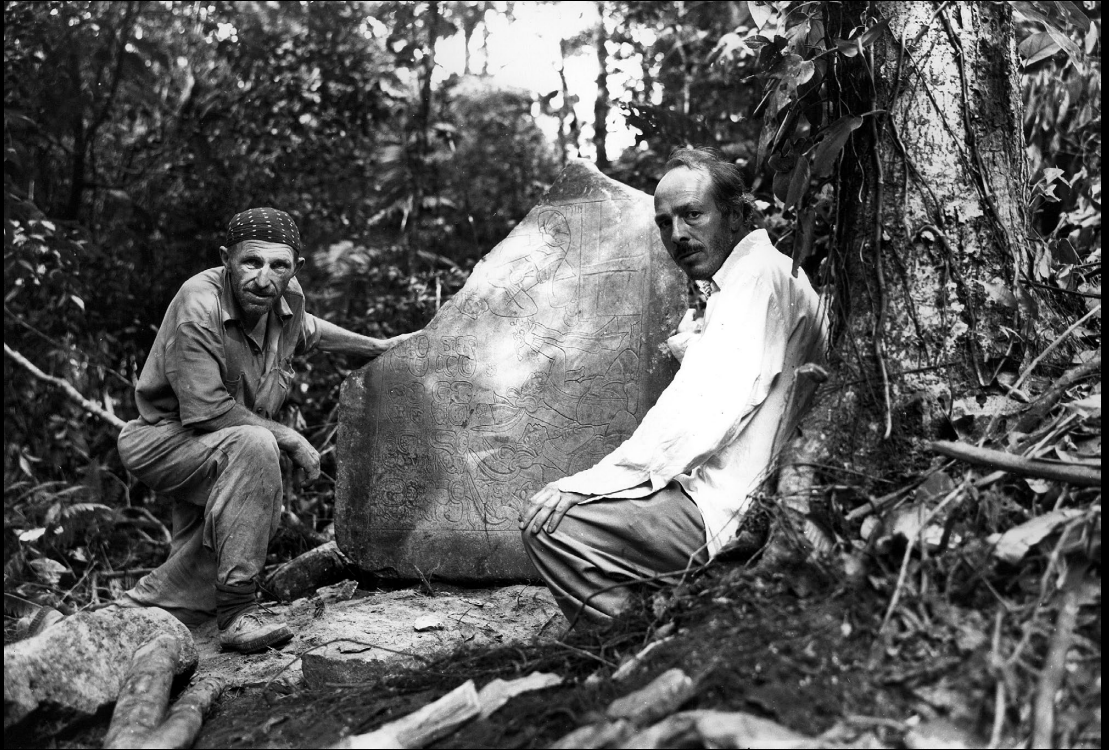
A Mesoweb Publication



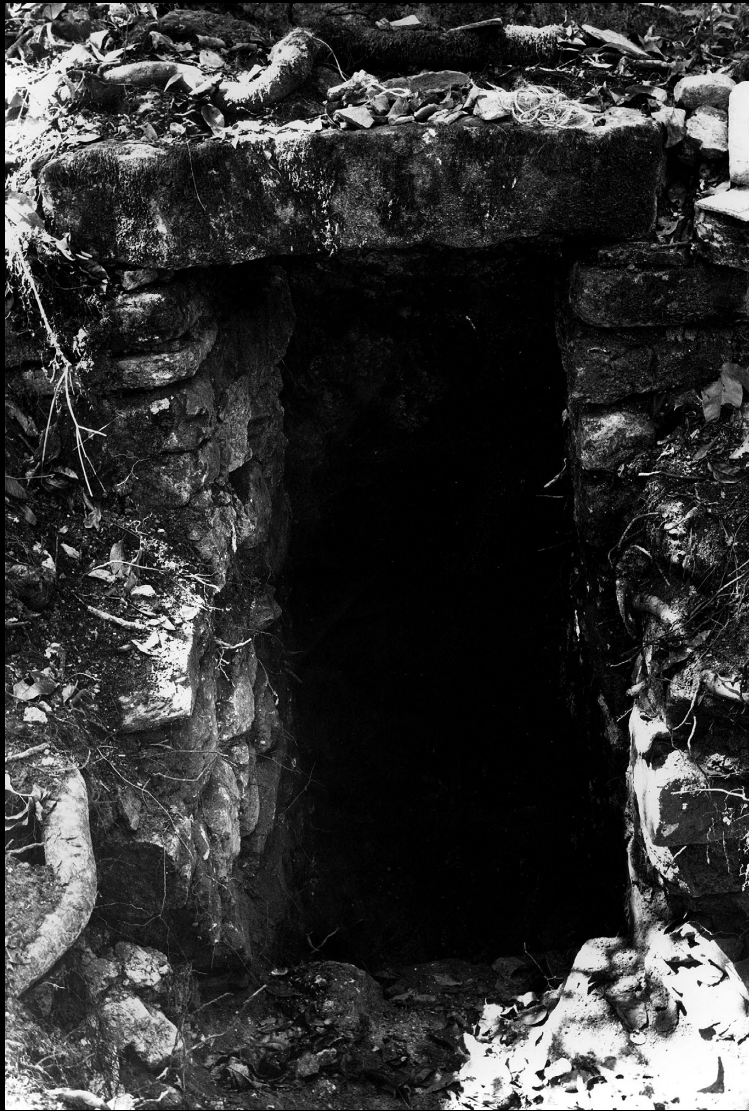
Giles Healey at Bonampak, 1978 (photo: Merle Greene Robertson).



Group at Bonampak. Front row: workman and Giles Healey.
Back row: Augustin Villagra Caleti, Antonio Tejada F.,
workman, Gustav Strömsvik, Karl Ruppert.



Gustav Strömsvik and Giles Healey at Bonampak.



Bonampak door with lintel (photo: Giles Healey).



Bonampak, Structure 1, north façade (photo: Giles Healey).



Bonampak, Structure 3, north façade (photo: Giles Healey).



Bonampak, Structure 4, north façade (photo: Giles Healey).



Bonampak, Structure 4, roofcomb, south side, east end (photo: Giles Healey).



Bonampak, Structure 4, roofcomb, east end (photo: Giles Healey).



Bonampak, Structure 5, stepped vault (photo: Giles Healey).



Bonampak, Structure 7 at right; structure 8 at left: north side
(photo: Giles Healey).



Bonampak, Structure 8, south side (photo: Giles Healey).



Bonampak, Structure 9, west side (photo: Giles Healey).



Bonampak, Stela 1 (photo: Giles Healey).



Bonampak, Stela 1 (mask; lower portion) (photo: Giles Healey).



Bonampak, Stela 1 (glyph block to viewer's right of figure's head) (photo: Giles Healey).



Bonampak, Stela 1 (detail) (photo: Giles Healey).



Bonampak, Stela 1 (detail) (photo: Giles Healey).



Bonampak, Stela 1 (detail) (photo: Giles Healey).



Bonampak, Stela 1 (detail) (photo: Giles Healey).



Bonampak, Stela 1 (glyph just above the base mask) (photo: Giles Healey).



Bonampak, Stela 1 (upper left portion) (photo: Giles Healey).



Bonampak, Stela 1 (upper left portion) (photo: Giles Healey).



Bonampak, Stela 2 (photo: Giles Healey).



Bonampak, Stela 2 (photo: Giles Healey).



Bonampak, Stela 2 (lower portion) (photo: Giles Healey).



Bonampak, Stela 2 (photo: Giles Healey).



Bonampak, Stela 2 (upper portion) (photo: Giles Healey).



Bonampak. Inscription on Stela 2 (photo: Giles Healey).



Bonampak, Stela 2 (upper portion) (photo: Giles Healey).



Bonampak, Stela 2 (detail of glyphs) (photo: Giles Healey).



Bonampak. Stela (photo: Giles Healey).



Bonampak, top portion of Stela 2 (photo: Giles Healey).



Bonampak, Stela 2 (upper portion, main body) (photo: Giles Healey).



Bonampak, Stela 2 (detail) (photo: Giles Healey).



Bonampak, bottom portion of Stela 2 (photo: Giles Healey).



Bonampak, Stela 3 (photo: Giles Healey).



Bonampak, Stela 3 (upper portion) (photo: Giles Healey).



Bonampak, Sulptured Stone 1 (photo: Giles Healey).



Bonampak, Sulptured Stone 1 (photo: Giles Healey).



Bonampak, Sulptured Stone 1 (photo: Giles Healey).



Bonampak, Sulptured Stone 2 (photo: Giles Healey).



Bonampak, Scuptured Stone 2 (photo: Giles Healey).



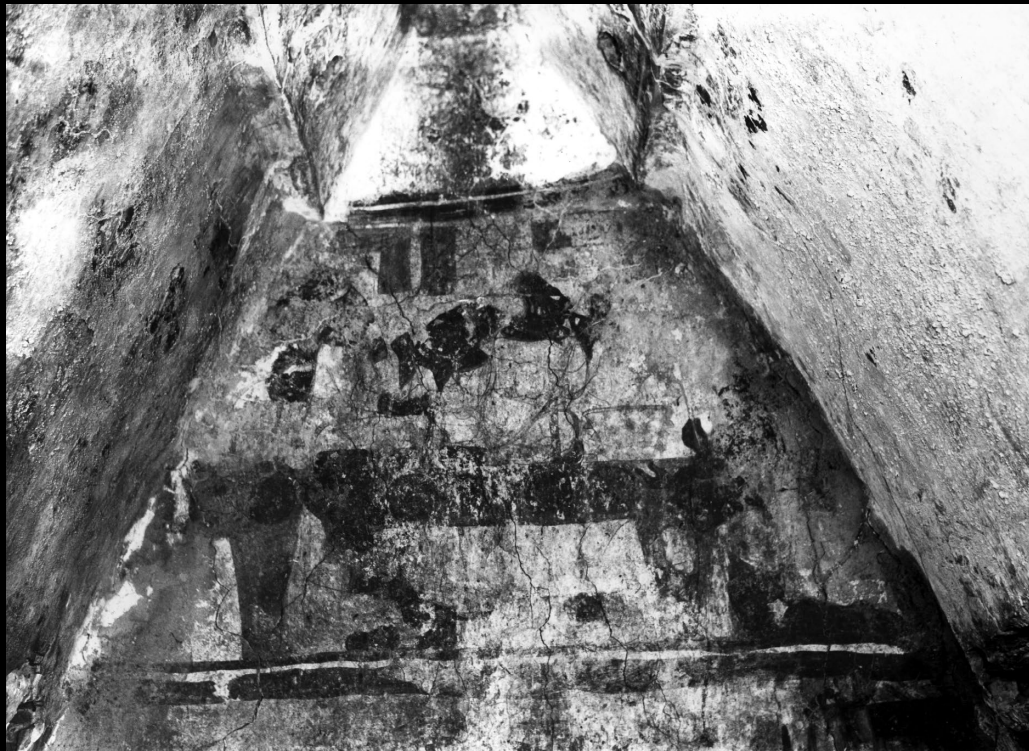
Bonampak, Lintel of Room 1, Structure 1 (photo: Giles Healey).



Bonampak, Lintel of Room 1, Structure 1 (photo: Giles Healey).



Bonampak, Lintel of Structure 6 (photo: Giles Healey).



Bonampak, Room 1, scene on the dias, west wall (photo: Giles Healey).



Bonampak, Room 1, lower register, north wall, far left (photo: Giles Healey).



Bonampak [lower register, east wall] (photo: Giles Healey).



Bonampak, Room 1, lower register, north wall (photo: Giles Healey).



Bonampak, Room 1, lower register, east wall (photo: Giles Healey).



Bonampak, detail of "Arraignment of Prisoners" Scene in Room 2, Structure 1, north wall (photo: Giles Healey).



Bonampak, Arraignment of Prisoners scene. Structure 1, Room 2, north wall (photo: Giles Healey).



Bonampak. Detail from the "Arraignment of Prisoners" Scene in Room 2, Structure 1, north wall (photo: Giles Healey).



Bonampak. Detail from the "Arraignment of Prisoners" Scene in Room 2, Structure 1, north wall (photo: Giles Healey).



Bonampak, Room 2, detail of fresco (photo: Giles Healey).



Bonampak, Room 2, detail of fresco (photo: Giles Healey).



Bonampak, Room 2, detail of fresco (photo: Giles Healey).



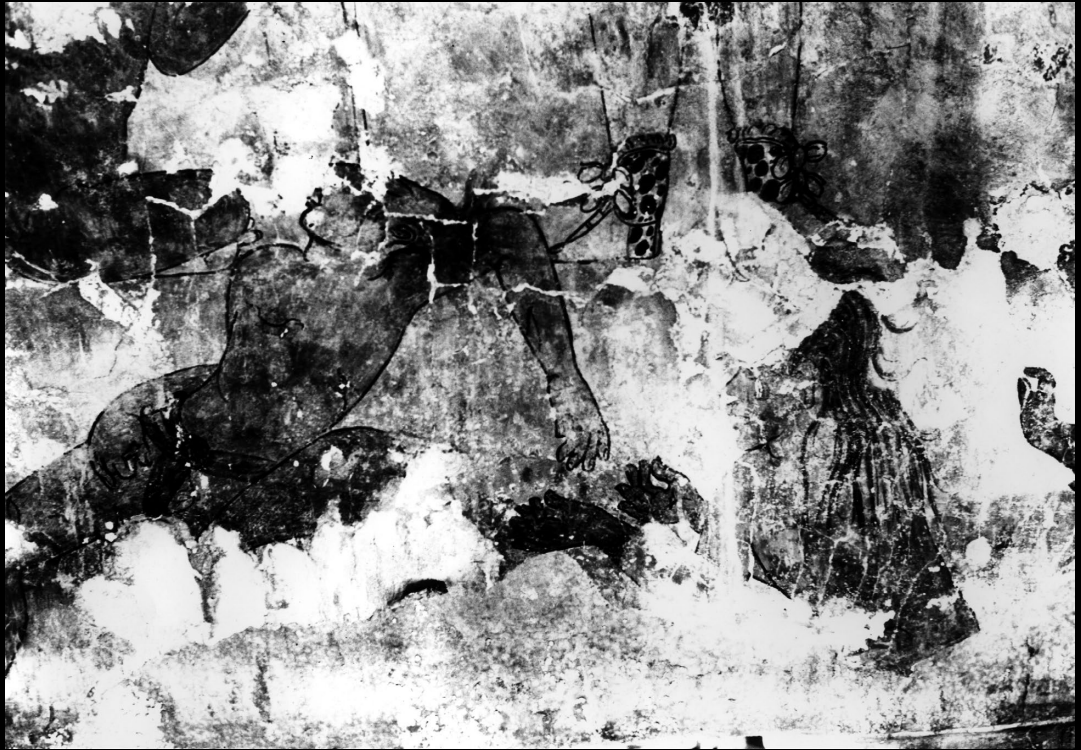
Bonampak. Detail from the "Arraignment of Prisoners" Scene
in Room 2, Structure 1, central register, far right, north wall
(photo: Giles Healey).



Bonampak, Room 2, detail of fresco (photo: Giles Healey).



Bonampak. Detail from the "Arraignment of Prisoners" Scene
in Room 2, Structure 1, north wall (photo: Giles Healey).



Bonampak. Prisoner Scene, Room 2, Structure 1, north wall
(photo: Giles Healey).



Bonampak. Room 2, top - lower register (photo: Giles Healey).



Bonampak. Room 2, far right, top of lower register (photo:
Giles Healey).



Bonampak. Hieroglyphic inscriptions. Structure 1 (photo: Giles Healey).



Bonampak. Hieroglyphic inscriptions. Structure 1 (photo: Giles Healey).



Bonampak. Hieroglyphic inscriptions. Structure 1 (photo: Giles Healey).



Bonampak. Hieroglyphic inscriptions. Structure 1 (photo: Giles Healey).



Bonampak. One of the Bonampak Mural drawings of Tejada's.
Room 1, north wall (photo: Giles Healey).



Bonampak. One of the Bonampak Mural drawings of Tejada's
(photo: Giles Healey).



Bonampak. One of the Bonampak Mural drawings of Tejada's
(photo: Giles Healey).



Bonampak. Lacandon by Stela 1 (photo: Giles Healey).



Bonampak. Lacandones. East wall. Room 1. Structure 1 (photo: Giles Healey).



Bonampak. Lacandones. East wall. Room 1. Structure 1 (photo: Giles Healey).



Bonampak. Lacandon Indians. Room 1 - south wall (photo: Giles Healey).



Bonampak. Lacandones. East wall. Room 1. Structure 1 (photo: Giles Healey).



Bonampak. Lacandon. Stela 1 (photo: Giles Healey).



Mesa Redonda group with Giles Healey (photo: Merle Greene Robertson).



Tercera Mesa Redonda de Palenque, visiting Bonampak. Merle Greene Robertson, Maria Cruz, Giles Healey, George Stuart; (far right) Emily Rabin, Nancy Troike. June 1978.



Giles Healey. Bonampak. 1978 (photo: Merle Greene Robertson).



Giles Healey. Bonampak. 1978 (photo: Merle Greene Robertson).



Giles Healey. Bonampak. 1978 (photo: Merle Greene Robertson).



Giles Healey. Bonampak. 1978 (photo: Merle Greene Robertson).



Giles Healey. Bonampak. 1978 (photo: Merle Greene Robertson).



George Stuart and Giles Healey. Bonampak. 1978 (photo: Merle Greene Robertson).



George Stuart and Giles Healey. Bonampak. 1978 (photo: Merle Greene Robertson).



Giles Healey. Bonampak. 1978 (photo: Merle Greene Robertson).



Giles Healey. Bonampak. 1978 (photo: Merle Greene Robertson).



Giles Healey. Bonampak. 1978 (photo: Merle Greene Robertson).



Giles Healey. Bonampak. 1978.



Giles Healey. Bonampak. 1978 (photo: Merle Greene Robertson).



Giles Healey. Bonampak. 1978 (photo: Merle Greene Robertson).



Giles Healey. Bonampak. 1978 (photo: Merle Greene Robertson).



Merle Greene Robertson. Bonampak. 1978.



Giles Healey. Bonampak. 1978 (photo: Merle Greene Robertson).



Giles Healey. Bonampak. 1978 (photo: Merle Greene Robertson).



Giles Healey at Bonampak, 1978 (photo: Merle Greene Robertson).



Group at Bonampak. Front row: workman and Giles Healey.
Back row: Augustin Villagra Caleti, Antonio Tejada F.,
workman, Gustav Strömsvik, Karl Ruppert.



Gustav Strömsvik and Giles Healey at Bonampak.



Bonampak door with lintel (photo: Giles Healey).



Bonampak, Structure 1, north façade (photo: Giles Healey).



Bonampak, Structure 3, north façade (photo: Giles Healey).



Bonampak, Structure 4, north façade (photo: Giles Healey).



Bonampak, Structure 4, north façade (photo: Giles Healey).



Bonampak, Structure 4, roofcomb, south side, east end (photo: Giles Healey).



Bonampak, Structure 4, roofcomb, east end (photo: Giles Healey).



Bonampak, Structure 5, stepped vault (photo: Giles Healey).



Bonampak, Structure 7 at right; structure 8 at left: north side
(photo: Giles Healey).



Bonampak, Structure 8, south side (photo: Giles Healey).



Bonampak, Structure 9, west side (photo: Giles Healey).



Bonampak, Structure 9, west side (photo: Giles Healey).



Bonampak, Stela 1 (photo: Giles Healey).



Bonampak, Stela 1 (mask; lower portion) (photo: Giles Healey).



Bonampak, Stela 1 (glyph block to viewer's right of figure's head) (photo: Giles Healey).



Bonampak, Stela 1 (detail) (photo: Giles Healey).



Bonampak, Stela 1 (detail) (photo: Giles Healey).



Bonampak, Stela 1 (detail) (photo: Giles Healey).



Bonampak, Stela 1 (detail) (photo: Giles Healey).



Bonampak, Stela 1 (glyph just above the base mask) (photo: Giles Healey).



Bonampak, Stela 1 (upper left portion) (photo: Giles Healey).



Bonampak, Stela 1 (upper left portion) (photo: Giles Healey).



Bonampak, Stela 2 (photo: Giles Healey).



Bonampak, Stela 2 (photo: Giles Healey).



Bonampak, Stela 2 (lower portion) (photo: Giles Healey).



Bonampak, Stela 2 (photo: Giles Healey).



Bonampak, Stela 2 (upper portion) (photo: Giles Healey).



Bonampak. Inscription on Stela 2 (photo: Giles Healey).



Bonampak, Stela 2 (upper portion) (photo: Giles Healey).



Bonampak, Stela 2 (detail of glyphs) (photo: Giles Healey).



Bonampak. Stela (photo: Giles Healey).



Bonampak, top portion of Stela 2 (photo: Giles Healey).



Bonampak, Stela 2 (upper portion, main body) (photo: Giles Healey).



Bonampak, Stela 2 (detail) (photo: Giles Healey).



Bonampak, bottom portion of Stela 2 (photo: Giles Healey).



Bonampak, Stela 3 (photo: Giles Healey).



Bonampak, Stela 3 (upper portion) (photo: Giles Healey).



Bonampak, Sulptured Stone 1 (photo: Giles Healey).



Bonampak, Sulptured Stone 1 (photo: Giles Healey).



Bonampak, Sulptured Stone 1 (photo: Giles Healey).



Bonampak, Sulptured Stone 2 (photo: Giles Healey).



Bonampak, Scuptured Stone 2 (photo: Giles Healey).



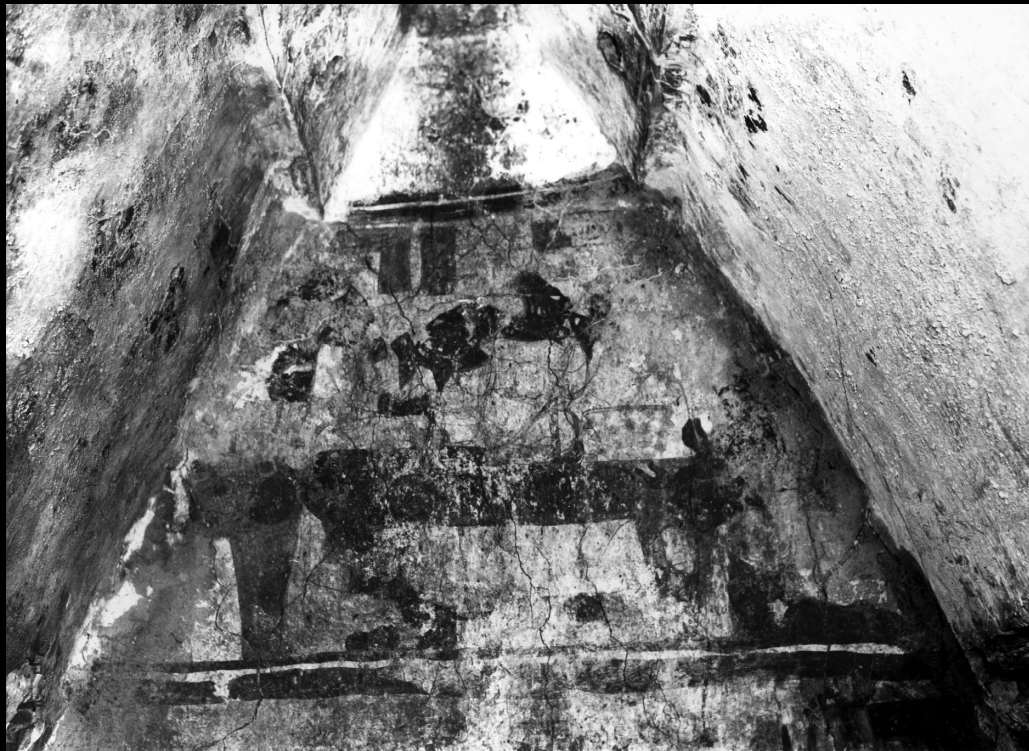
Bonampak, Lintel of Room 1, Structure 1 (photo: Giles Healey).



Bonampak, Lintel of Room 1, Structure 1 (photo: Giles Healey).



Bonampak, Lintel of Structure 6 (photo: Giles Healey).



Bonampak, Room 1, scene on the dias, west wall (photo: Giles Healey).



Bonampak, Room 1, lower register, north wall, far left (photo: Giles Healey).



Bonampak [lower register, east wall] (photo: Giles Healey).



Bonampak, Room 1, lower register, north wall (photo: Giles Healey).



Bonampak, Room 1, lower register, east wall (photo: Giles Healey).



Bonampak, detail of "Arraignment of Prisoners" Scene in Room 2, Structure 1, north wall (photo: Giles Healey).



Bonampak, Arraignment of Prisoners scene. Structure 1, Room 2, north wall (photo: Giles Healey).



Bonampak. Detail from the "Arraignment of Prisoners" Scene
in Room 2, Structure 1, north wall (photo: Giles Healey).



Bonampak. Detail from the "Arraignment of Prisoners" Scene in Room 2, Structure 1, north wall (photo: Giles Healey).



Bonampak, Room 2, detail of fresco (photo: Giles Healey).



Bonampak, Room 2, detail of fresco (photo: Giles Healey).



Bonampak, Room 2, detail of fresco (photo: Giles Healey).



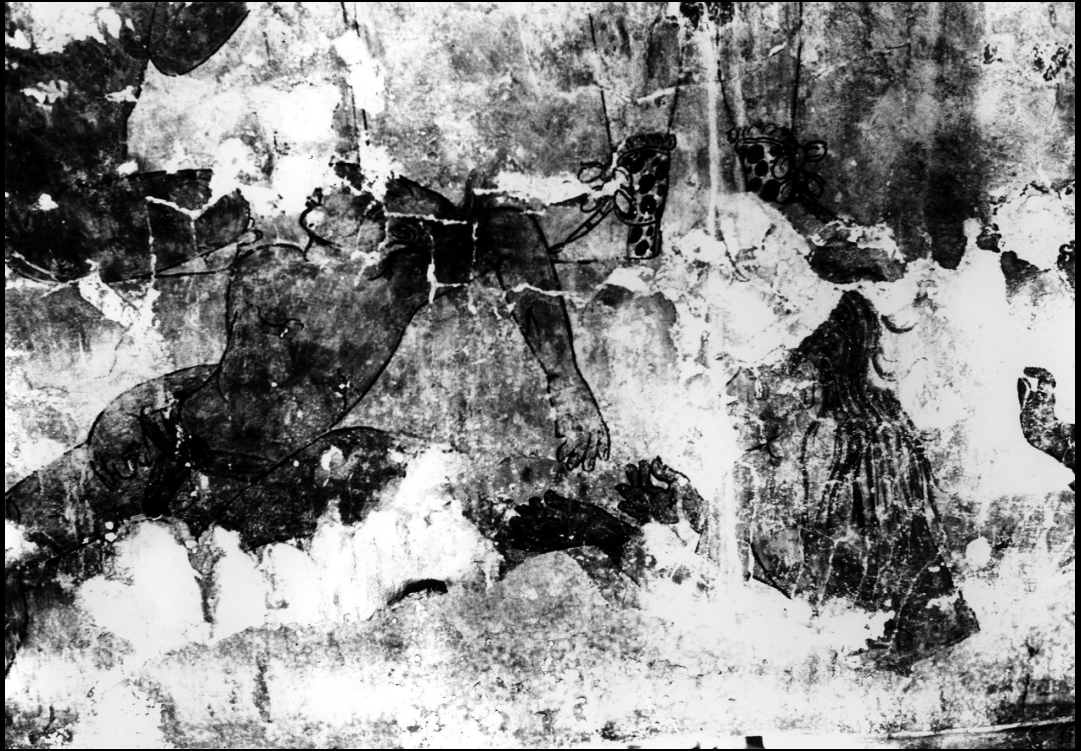
Bonampak. Detail from the "Arraignment of Prisoners" Scene
in Room 2, Structure 1, central register, far right, north wall
(photo: Giles Healey).



Bonampak, Room 2, detail of fresco (photo: Giles Healey).



Bonampak. Detail from the "Arraignment of Prisoners" Scene
in Room 2, Structure 1, north wall (photo: Giles Healey).



Bonampak. Prisoner Scene, Room 2, Structure 1, north wall
(photo: Giles Healey).



Bonampak. Room 2, top - lower register (photo: Giles Healey).



Bonampak. Room 2, far right, top of lower register (photo:
Giles Healey).



Bonampak. Hieroglyphic inscriptions. Structure 1 (photo: Giles Healey).



Bonampak. Hieroglyphic inscriptions. Structure 1 (photo: Giles Healey).



Bonampak. Hieroglyphic inscriptions. Structure 1 (photo: Giles Healey).



Bonampak. Hieroglyphic inscriptions. Structure 1 (photo: Giles Healey).



Bonampak. One of the Bonampak Mural drawings of Tejada's.
Room 1, north wall (photo: Giles Healey).



Bonampak. One of the Bonampak Mural drawings of Tejada's
(photo: Giles Healey).



Bonampak. One of the Bonampak Mural drawings of Tejada's
(photo: Giles Healey).



Bonampak. Lacandon by Stela 1 (photo: Giles Healey).



Bonampak. Lacandones. East wall. Room 1. Structure 1 (photo: Giles Healey).



Bonampak. Lacandones. East wall. Room 1. Structure 1 (photo: Giles Healey).



Bonampak. Lacandon Indians. Room 1 - south wall (photo: Giles Healey).



Bonampak. Lacandones. East wall. Room 1. Structure 1 (photo: Giles Healey).



Bonampak. Lacandon. Stela 1 (photo: Giles Healey).



Mesa Redonda group with Giles Healey (photo: Merle Greene Robertson).



Tercera Mesa Redonda de Palenque, visiting Bonampak. Merle Greene Robertson, Maria Cruz, Giles Healey, George Stuart; (far right) Emily Rabin, Nancy Troike. June 1978.



Giles Healey. Bonampak. 1978 (photo: Merle Greene Robertson).



Giles Healey. Bonampak. 1978 (photo: Merle Greene Robertson).



Giles Healey. Bonampak. 1978 (photo: Merle Greene Robertson).



Giles Healey. Bonampak. 1978 (photo: Merle Greene Robertson).



Giles Healey. Bonampak. 1978 (photo: Merle Greene Robertson).



George Stuart and Giles Healey. Bonampak. 1978 (photo: Merle Greene Robertson).



George Stuart and Giles Healey. Bonampak. 1978 (photo: Merle Greene Robertson).



Giles Healey. Bonampak. 1978 (photo: Merle Greene Robertson).



Giles Healey. Bonampak. 1978 (photo: Merle Greene Robertson).



Giles Healey. Bonampak. 1978 (photo: Merle Greene Robertson).



Giles Healey. Bonampak. 1978.



Giles Healey. Bonampak. 1978 (photo: Merle Greene Robertson).



Giles Healey. Bonampak. 1978 (photo: Merle Greene Robertson).



Giles Healey. Bonampak. 1978 (photo: Merle Greene Robertson).



Merle Greene Robertson. Bonampak. 1978.



Giles Healey. Bonampak. 1978 (photo: Merle Greene Robertson).



Giles Healey. Bonampak. 1978 (photo: Merle Greene Robertson).